

**PRESIDENT'S STRING QUARTET AUDITION  
MATERIAL**

**VIOLA**

## PRESIDENT'S STRING QUARTET AUDITION MATERIAL

The following packet of excerpts is the ONLY material you will need to prepare for the audition. When you come in to play, you will play the excerpts straight through in the order they appear in the packet. Play ONLY the areas that are clearly marked between brackets.

Here are some suggestions for how to do well in the audition:

1. The composer and title of each work is included so you can easily locate a recording or two. You should assume that you will play the excerpts better if you **understand the context of the passage by listening to a few recordings.**
2. Understand that the **bowings and dynamics are not optional**
3. Work with a **tuner**
4. Work with a **metronome**
5. Work on the excerpts with at least as much dedication as your solo literature

# Quartet No. 1

e minor

# Quartetto.

Viola.

POINT LOMA, CALIFORNIA.

International Children's Lotu H.

30064

B. Smetana.

I. Allegro vivo appassionato.

The musical score for the Viola part of Quartet No. 1 in e minor by Bedřich Smetana is presented across 11 staves. The music is in 3/4 time and begins with a dynamic marking of *sf*. The first section, marked 'I. Allegro vivo appassionato', features a variety of rhythmic patterns, including eighth and sixteenth notes, and rests. A large bracket spans the first two staves. The score includes several triplet markings (3) and dynamic changes, such as *f*, *espress.*, *sf*, *ff*, *p*, and *pp*. Section A begins on the seventh staff with a key signature change to one flat (B-flat major) and includes a trill marking. Section B begins on the tenth staff with a key signature change back to e minor and includes a *dim.* marking. The piece concludes with a final dynamic of *pp* and a first ending bracket.

Viola.

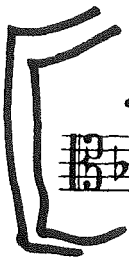
The musical score for Viola consists of 13 staves. The key signature is one sharp (F#) and the time signature is 3/8. The score includes various dynamics such as *f*, *sf*, *espress. p*, *p*, *pp*, *sf*, *ff*, *rit.*, *a tempo*, *pp*, *piu p*, *rall.*, *sf*, and *sf*. Articulations include *tr* (trill) and *tr* (trill) with a fermata. Section markers C, D, E, F, and G are placed above the staves. A sequence of measures numbered 1 through 14 is shown in the middle of the score. The score concludes with a *sf* dynamic marking.

Viola.

The musical score for Viola consists of 13 staves. The first staff begins with a dynamic of *sf* and includes a large bracketed section. The second staff has a dynamic of *sf dim.* and a hairpin. The third staff is marked *p espress.*. The fourth staff has a dynamic of *f < sf*. The fifth staff is marked *p* and *tranquillo*. The sixth staff has a dynamic of *f cresc.* and *ff*. The seventh staff is marked *p*. The eighth staff is marked *Meno allegro.*, *rit.*, *a tempo*, *p*, and *più p*. The ninth staff is marked *pp* and *cresc.*. The tenth staff is marked *L*, *p*, *rall.*, and *a tempo*. The eleventh staff is marked *sf*. The twelfth staff is marked *dim.* and *pp*. The thirteenth staff is marked *1*.

# Schubert Death & Maiden Mvt I

# Shostakovich 8 mvnt III



Handwritten notes above the staff: 1 0 4 3 1 4 1 - 1

Handwritten notes below the staff: *ff*

Handwritten notes above the staff: 2-2, *dim.*, *mf*, *p*

Handwritten notes below the staff: *dim.*, *mf*, *p*

Handwritten notes in a box: 47

Handwritten notes above the staff: *p*



Handwritten notes above the staff: 48, *f*, *dim.*, *mf*, *p*, *vib*

Handwritten notes below the staff: *p sempre*

Handwritten notes above the staff: *p*

Handwritten notes above the staff: 49, *p*

Handwritten notes above the staff: 5

viola



FUGA.  
Allegro.

# Mozart K168 Mvt II

*Mus. da capo.*

